



www.sovol3d.com



Facebook QR Code

SHENZHEN Lian Dian Chuang Technology LTD.

Official Website: www.sovol3d.com

Tel: +86-0755-2107 4700

E-mail: sale@sovol3d.com info@sovol3d.com

REFERENCE

- The following are the recommended temperatures for different materials. Each drying cycle lasts from 6 to 12 hours.

Temperature	40-50	45-50	50
Filament types	PLA / Wood	PETG / TPU / PVA	ABS / PC

- When drying filament, do not close the lid completely. Leaving a gap will help let the moist air out.



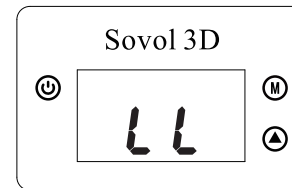
- The Sovol Filament Dryer can provide a sealed environment for filament storage. To use it as a filament storage box, heat it until the humidity in the box is below 20%. Then, disconnect the power supply, lock the snap button, cover the plug and the sealing cap of the power jack to keep the inside of the box dry.



Note:

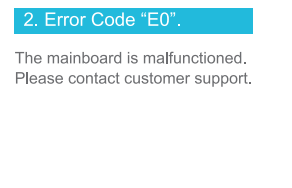
- The silica gel desiccant packet that came with the filament roll can be reused. Put it inside the dryer to maintain low humidity for filament storage.
- Always store your opened filament in the dryer to prevent moisture.

TROUBLESHOOTING



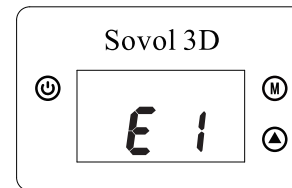
1. Error Code "LL".

The temperature in the box is lower than -10 °C. The operating temperature is between -9°C to 85 °C.



2. Error Code "E0".

The mainboard is malfunctioned. Please contact customer support.



3. Error Code "E1".

The thermistor of the electric heating plate has connection issues. Please contact customer support.

Sovol 3D



Sovol Filament Dryer User Manual

Read these instructions carefully before using

INTRODUCTION

Dear customer, thank you for choosing Sovol 3D products. The Sovol Filament Dryer is used for drying and storing FDM Filament. It can dry moist filament and it also has excellent sealing performance. It can store opened filament for a long time. For a better customer experience, you can learn more by visiting our official website: <https://sovol3d.com/>.

NOTES

- Please read this manual carefully before use and keep it for future reference
- Disconnect the power supply when not in use.
- Do not touch the bottom plate when it's heated to avoid burns.
- This machine should not be operated by children without adult supervision
- The operation temperature is between -10°C and 85 °C.
- Use on a flat surface to prevent falls.
- Do not repair or disassemble the machine by yourself. Please contact customer support if you have any issues.

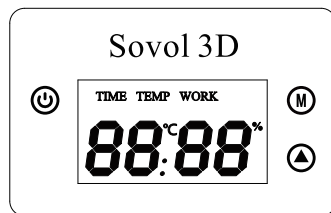
SPECIFICATIONS

Input Voltage:	100V~240V 50/60Hz
Rated Power	48W
Filament Diameter	1.75mm/2.85mm
Max Capacity	Two spools ≤ 70mm (width) or one spool ≤ 150 mm (width)
Humidity range	00%~99% (±2%)
Operation temperature	-9°C~85°C (±0.3°C)
External Dimensions	246(L)*175(W)*242(H)mm
Net Weight:	1.2kg

PRODUCT INFORMATION



- 1 Control Panel To control the machine.
- 2 Snap Button To seal the box properly.
- 3 Filament holes Let the filament pass through while printing.
- 4 Power Jack To connect the adapter.



On/Off button

Function button

Up button

OPERATION



STEP 1:

Open the sealing cap of the power jack and connect the adapter.

STEP 2:

Unlock the snap button, open the lid, and then put the spools in.

Notes: Two spools ≤70mm or one spool ≤150mm in width.



STEP 3:

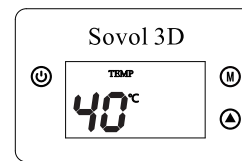
If you need to print during the drying process, open the plug on the lid and pull the filament out through the holes as shown in the image.

Notes: If you're only using it as a storage box, skip this step.

STEP 4:

Press to power ON. The temperature and humidity in the box will be shown on the screen.

Notes: It will be turned off if there's no operation for 3 minutes.



STEP 5:

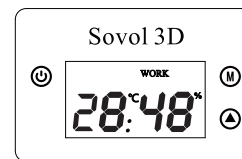
Press to set the temperature. The "TEMP" on the screen means temperature setting mode. The starting temperature is 40 °C. Press to set it up to 50 °C.

Notes: It will return to Step 4, if there's no operation for 5 seconds.

STEP 6:

Press again to set drying time. The "TIME" on the screen means time setting mode. The default cycle is 6h, press to set it between 6-12h.

Notes: It will return to Step 4, if there's no operation for 5 seconds.



STEP 7:

Press again to enter working mode. The "WORK" on the screen, means start drying. The temperature and humidity in the box and the remaining working time will be shown on the screen. It will be updated every 5 seconds.

STEP 8:

If you need to adjust the temperature or the cycle time, press to return to Step 5 and 6 and start over.

